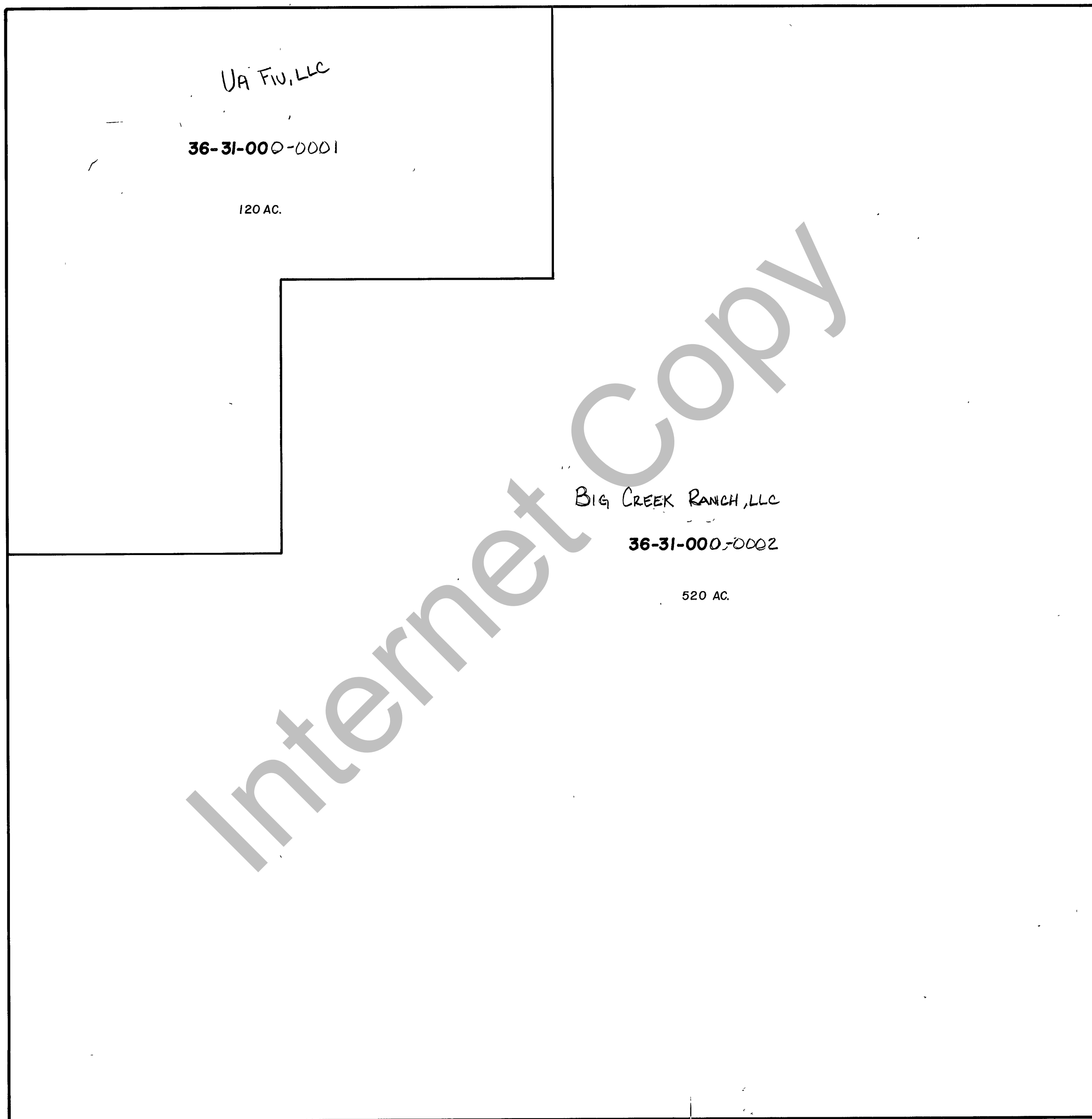


RICH COUNTY  
SECTION 31 T. 13 N. R. 5 E., S.L.B. & M.



Internet Copy

REVISIONS		

THIS PLAT IS MADE SOLELY FOR THE PURPOSE OF ASSISTING IN LOCATING THE LAND, AND THE RECORDER ASSUMES NO LIABILITY FOR VARIATIONS, IF ANY, WITH AN ACTUAL SURVEY.

Section 31 T. 13 N. R. 5E  
drawn by MVH date 11-80

book \_\_\_\_\_ page \_\_\_\_\_  
scale 1"=400'