

RESOLUTION NO. 17-1

RESOLUTION OF THE BOARD OF RICH COUNTY COMMISSIONERS
DECLINING A REQUEST FOR SERVICES TO PROVIDE
CULINARY WATER IN THE UNINCORPORATED COUNTY

WHEREAS, a Request for Services to provide culinary water service to a specified area in unincorporated Rich County (see map attached) was filed with the Rich County Clerk, pursuant to Utah Code Ann. § 17B-1-204; and

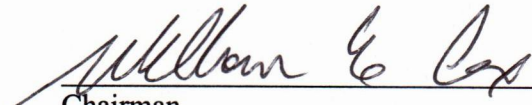
WHEREAS, the Board of Commissioners held a public hearing regarding the request on April 5, 2017 for the purpose of receiving input from the public; and

WHEREAS, the Board of Commissioners has decided not to provide the requested services;

NOW THEREFORE, the Board of Commissioners hereby declines the Request for Services.


RESOLVED this 3 day of May, 2017.

BOARD OF RICH COUNTY COMMISSIONERS



Chairman

ATTEST:



Becky Peart
Rich County Clerk

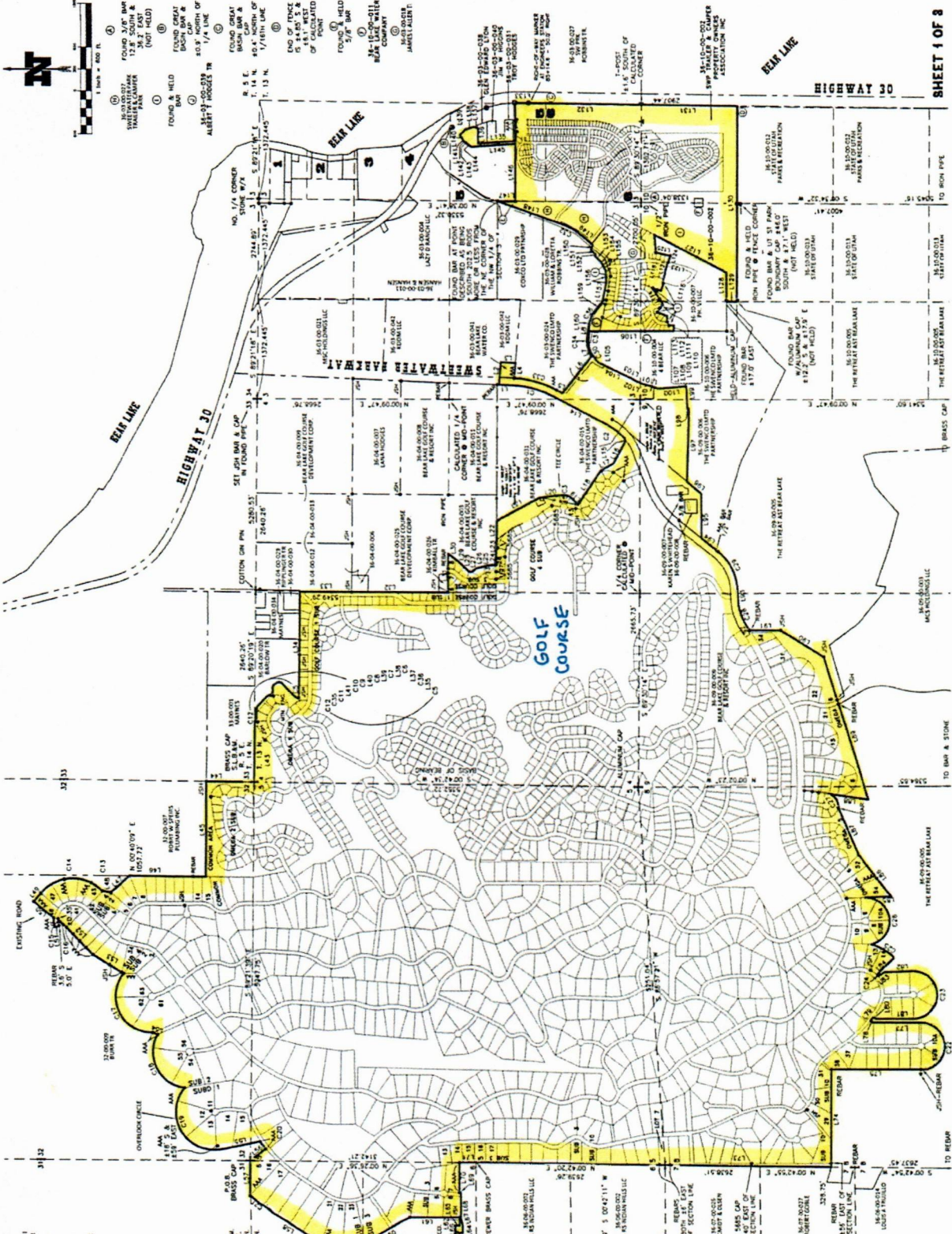
Commissioner Bill Cox voted yes

Commissioner Norman Weston voted yes

Commissioner Thomas Weston voted yes

SURVEYOR'S CERTIFICATE
 I, Jeff S. Brown, do hereby certify that I am a Registered Land Surveyor in the State of Missouri, License No. 110023, and that I have made and/or caused to be made a true and correct plat of the above described land and that I am not aware of any other claims to the land represented hereon and believe that I am not aware of any knowledge and belief.

ELECTRONIC COPY
2-08-17



DATE: 2/08/17
 DRAWN BY: JSB
 JOB NUMBER: 10-116
 SCALE: 1" = 600'

SURVEY LOCATION
 SECTIONS: 2, 4, 5, 8, 9, 10, 11, 13, N. R. 6 E.
 SECTION: 28 T. 14 N., R. 6 E.
 OF THE SALT LAKE BASE AND MERIDIAN.

PROPERTY SURVEY FOR THE BEAR LAKE WATER BEAR LAKE COMPANY

JCM SURVEYING & DRAFTING INC.
 P.O. BOX 300 • WETLAKE, UTAH 84339
 (435) 245-9000 • TOLL FREE 1-866-432-0260

PROPERTY SURVEY
 ENGINEERING DRAWING
 CONSTRUCTION PLANNING
 SITE & ARCHITECTURAL
 DESIGN